



**T&S BRASS AND BRONZE WORKS, INC.**

2 SADDLEBACK COVE / P.O. BOX 1088 / TRAVELERS REST, SC 29690

PHONE 800-476-4103

FAX 864-834-3518



Model No.

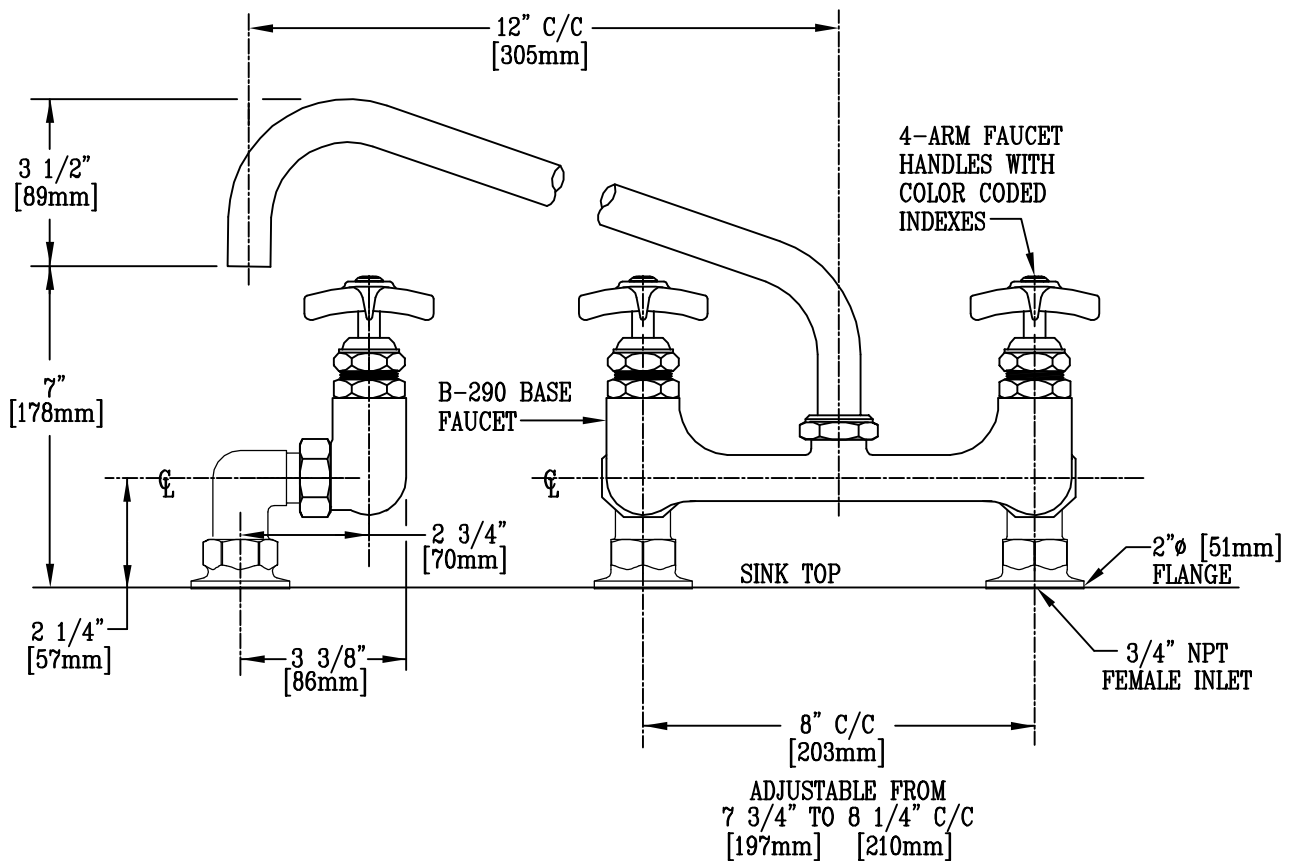
B-0293-01

Item No.:

Job Name:

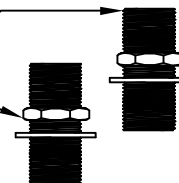
Architect/Engineer Approval:

Notes:



NOTE : DRILL 1 1/4"Ø [32mm] HOLES ON 8" C/C IN SINK TOP.

INCLUDES (2)  
B-0427 SUPPLY  
NIPPLES, 3/4" NPT



NSF STANDARD 61, SECTION 9 CERTIFIED.

Product Description: KETTLE & POT SINK MIXING FAUCET WITH 12" SWING NOZZLE, 4-ARM KITCHEN HANDLES, & 3/4" NPT MALE SUPPLY NIPPLES	Drawn:	Checked:	Scale:
	LEL	JKD	1 : 4
	Approved MVW	Date: 9/11/02	