



T&S BRASS AND BRONZE WORKS, INC.

2 SADDLEBACK COVE / P.O. BOX 1088 / TRAVELERS REST, SC 29690

PHONE 800-476-4103

FAX 864-834-3518



Model No.

B-0504-03

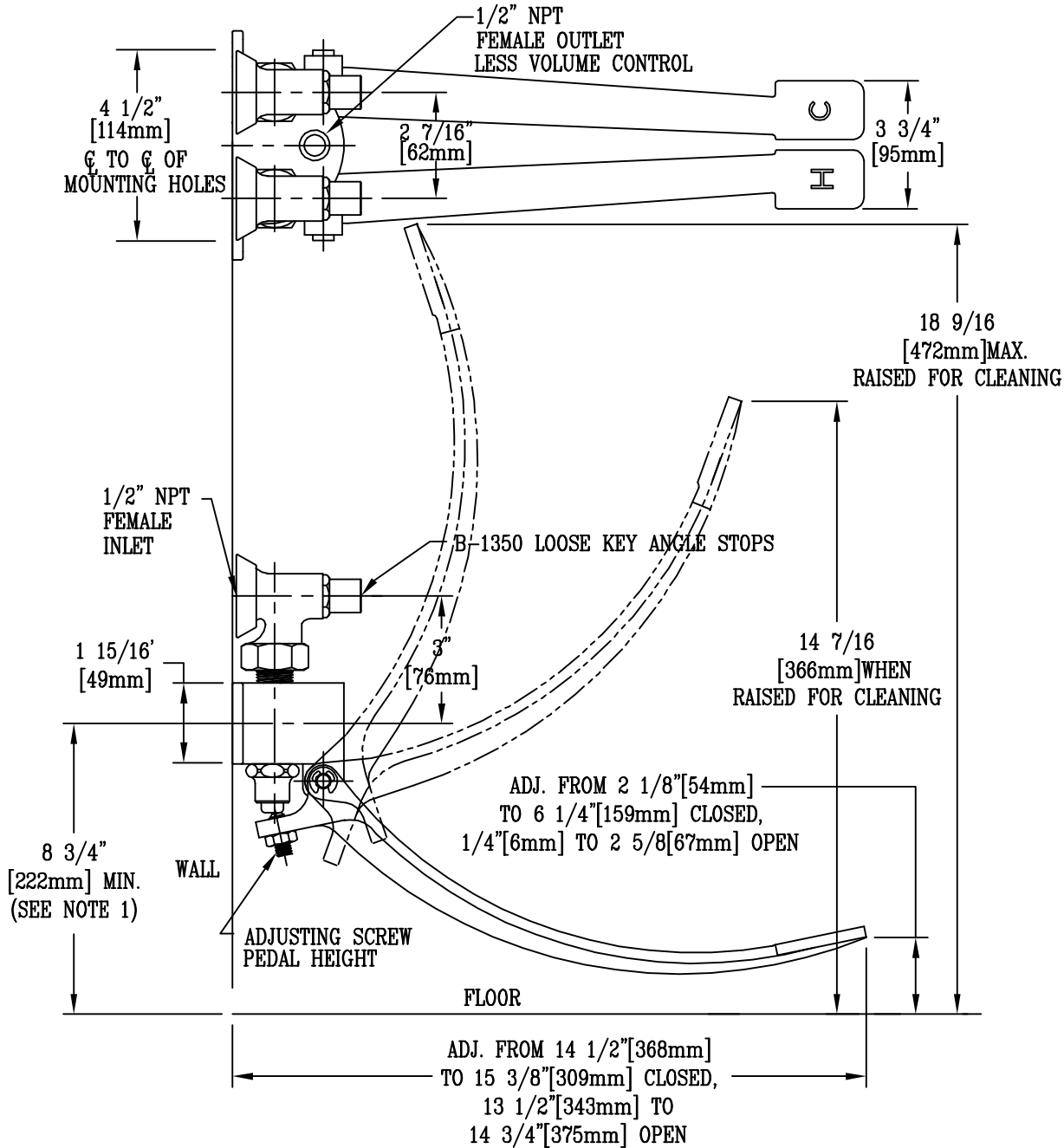
Item No.:

REG.#A2601
ISO #9002

Job Name:

Architect/Engineer Approval:

Notes:



NOTE 1. ALL PEDAL POSITION DIMENSIONS ARE BASED ON A RECOMMENDED MIN. MTG. HEIGHT OF 8 3/4" [222mm] ABOVE FIN. FLOOR

NOTE 2. FURNISHED WITH (2) WOOD MOUNTING SCREWS

NOTE 3. FOR LOOSE KEY ANGLE STOPS AND VOLUME CONTROL, SPECIFY B-0504-02

Product Description:

Drawn:

Checked

Scale:

TME

MVW

1:4

Approved

Date:

MVW

11/15/99

DOUBLE PEDAL VALVE WITH
LOOSE KEY ANGLE STOPS