



T&S BRASS AND BRONZE WORKS, INC.

2 Saddleback Cove / P.O. Box 1088
Travelers Rest, SC 29690



REG. #A2601
ISO #9001

Model No.
B-0662

Item No.

Travelers Rest, SC: 800-476-4103 Simi Valley, CA: 800-423-0150 Fax: 864-834-3518 www.tsbrass.com

This Space for Architect/Engineer Approval

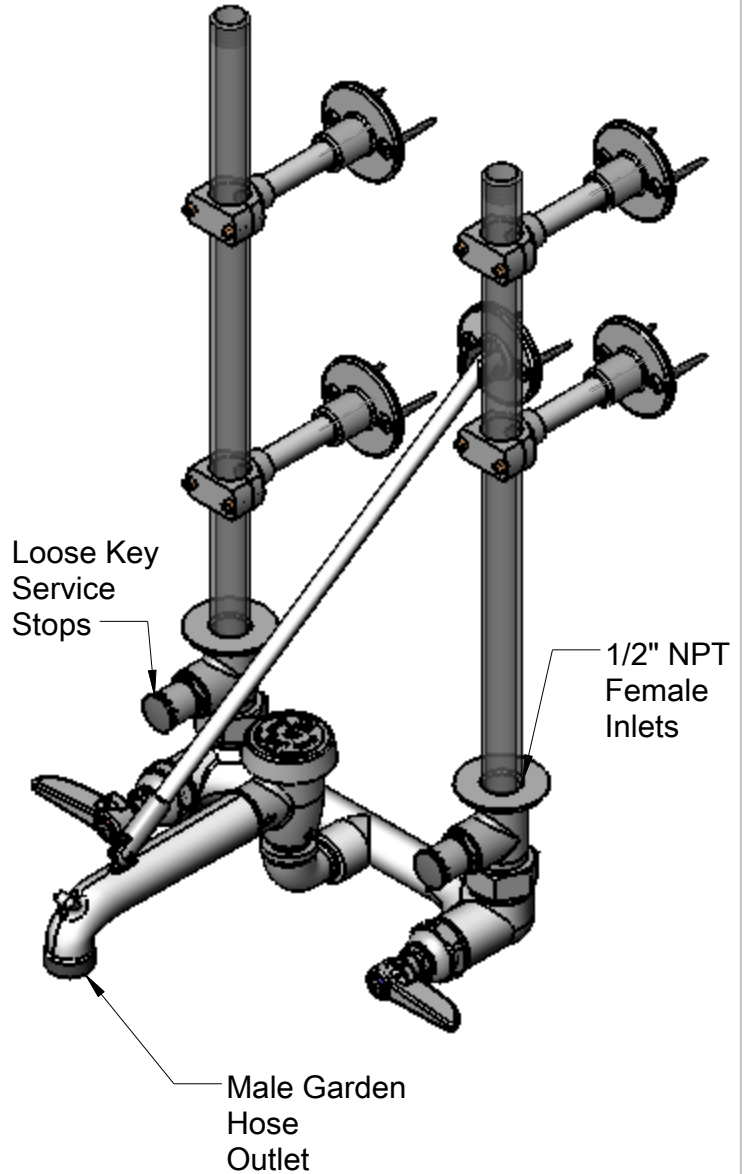
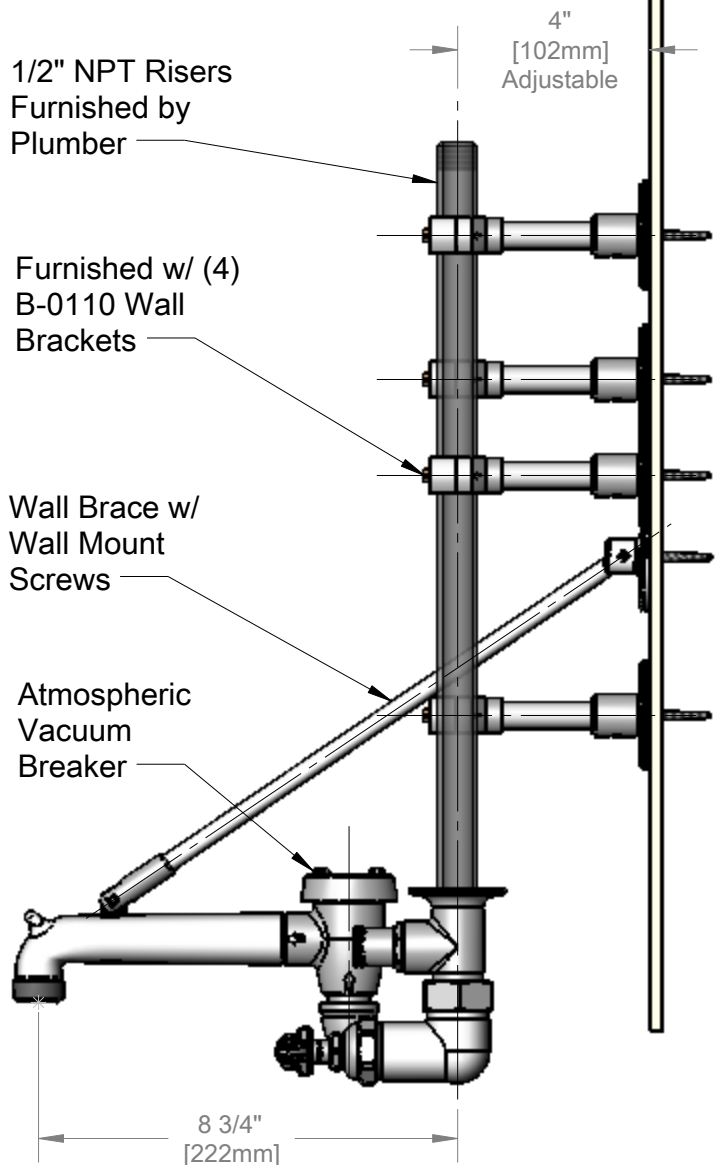
Job Name _____ Date _____

Model Specified _____ Quantity _____

Customer/Wholesaler _____

Contractor _____

Architect/Engineer _____



Product Specifications:

**Service Sink Faucet for
Exposed Wall Mounted Supplies from Above**

Drawn
WJS

Checked
JRM

Approved
JHB

Scale:

1:4

Date:

08/24/06



T&S BRASS AND BRONZE WORKS, INC.

2 Saddleback Cove / P.O. Box 1088
Travelers Rest, SC 29690



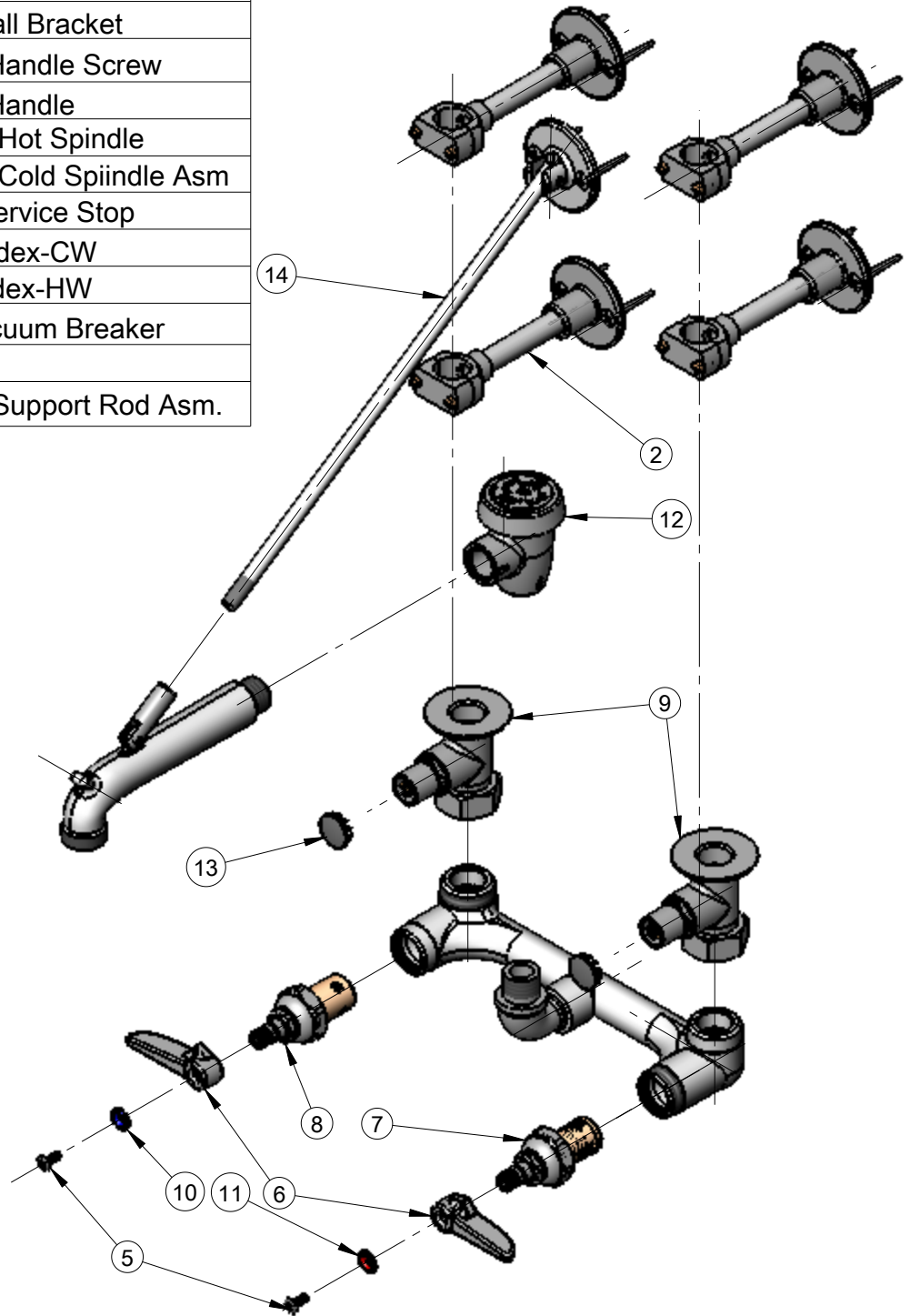
REG. #A2601
ISO #9001

Model No.
B-0662

Item No.

Travelers Rest, SC: 800-476-4103 Simi Valley, CA: 800-423-0150 Fax: 864-834-3518 www.tsbrass.com

ITEM	PART NO.	DESCRIPTION
1	012657-40	B-0662 Base Fct
2	155-B0110	1/2" Wall Bracket
5	000922-45	Lever Handle Screw
6	177F	Lever Handle
7	002712-40	Eterna Hot Spindle
8	002711-40	Eterna Cold Spiindle Asm
9	00JJ	00JJ Service Stop
10	001660-45	Blue Index-CW
11	001661-45	Red Index-HW
12	B-0969	1/2 Vacuum Breaker
13	001605-45	Cap
14	009546-40	Upper Support Rod Asm.



Product Specifications:

Service Sink Faucet for
Exposed Wall Mounted Supplies from Above

Drawn WJS	Checked JRM	Approved JHB
Scale: 1:4		Date: 08/24/06