

# T&S BRASS AND BRONZE WORKS, INC.

2 SADDLEBACK COVE / P.O. BOX 1088 / TRAVELERS REST, SC 29690

PHONE 800-476-4103

FAX 864-834-3518



REG.#A2601  
ISO #9002

Model No.

B-0677

Item No.:

Job Name:

Architect/Engineer Approval:

Notes:

VACUUM BREAKER ASSEMBLY

HOSE & SPRAY ATTACH TO WALL HOOK OUTLET AT THIS POINT

HOSE & SPRAY ATTACH TO WALL HOOK OUTLET AT THIS POINT

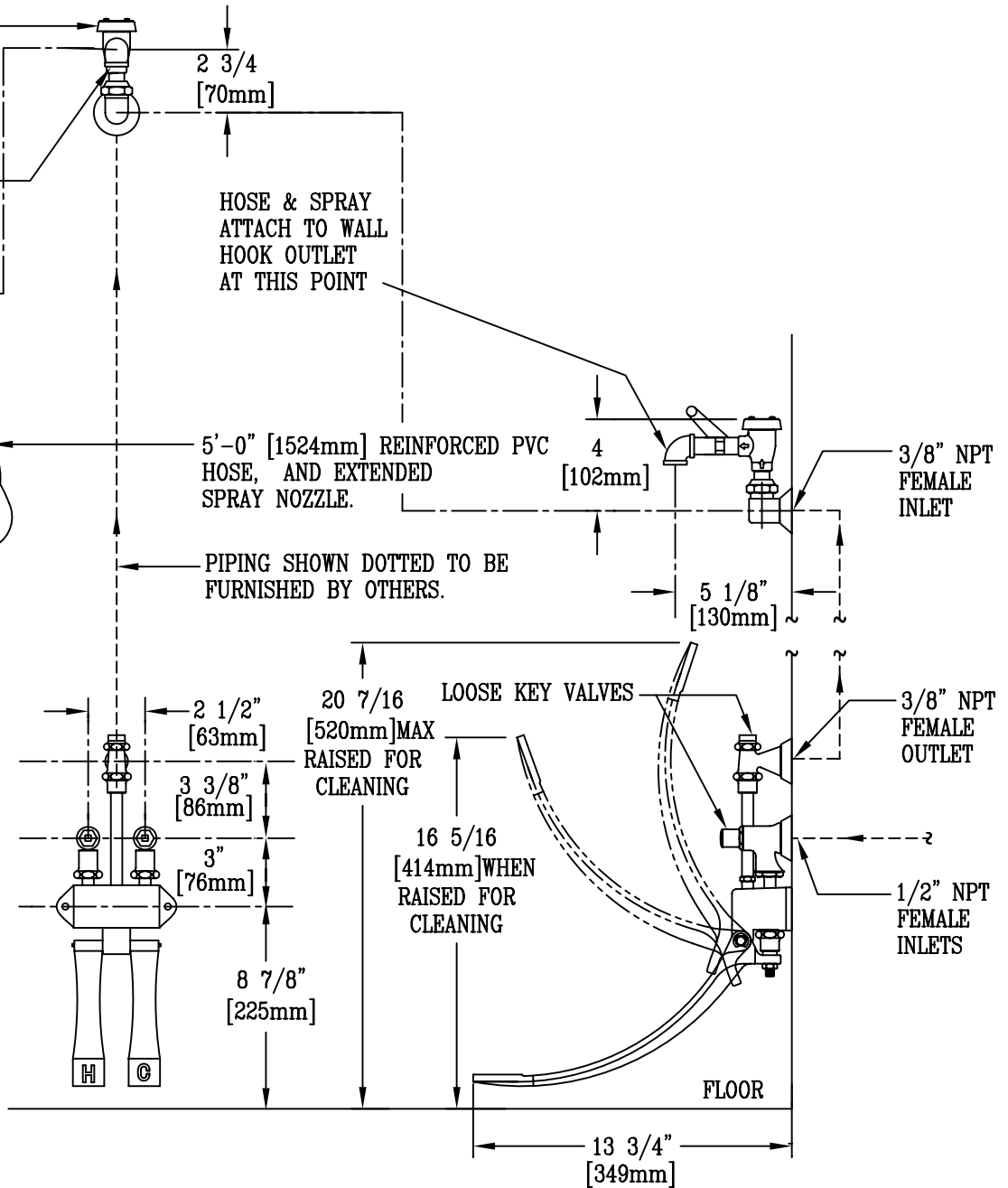
5'-0" [1524mm] REINFORCED PVC HOSE, AND EXTENDED SPRAY NOZZLE.

PIPING SHOWN DOTTED TO BE FURNISHED BY OTHERS.

3/8" NPT FEMALE INLET

3/8" NPT FEMALE OUTLET

1/2" NPT FEMALE INLETS



Product Description:  
BED PAN WASHER WITH FOOT VALVE CONTROL,  
INTEGRAL LOOSE KEY STOPS, VACUUM BREAKER,  
& EXTENDED SPRAY OUTLET

Drawn:

WJS

Approved

CA

Checked

MW

Scale:

1.5=1'

Date:

11/22/95