



T&S BRASS AND BRONZE WORKS, INC.
 2 SADDLEBACK COVE / P.O. BOX 1088 / TRAVELERS REST, SC 29690
 PHONE 800-476-4103 - FAX 864- 834-3518



Model No.

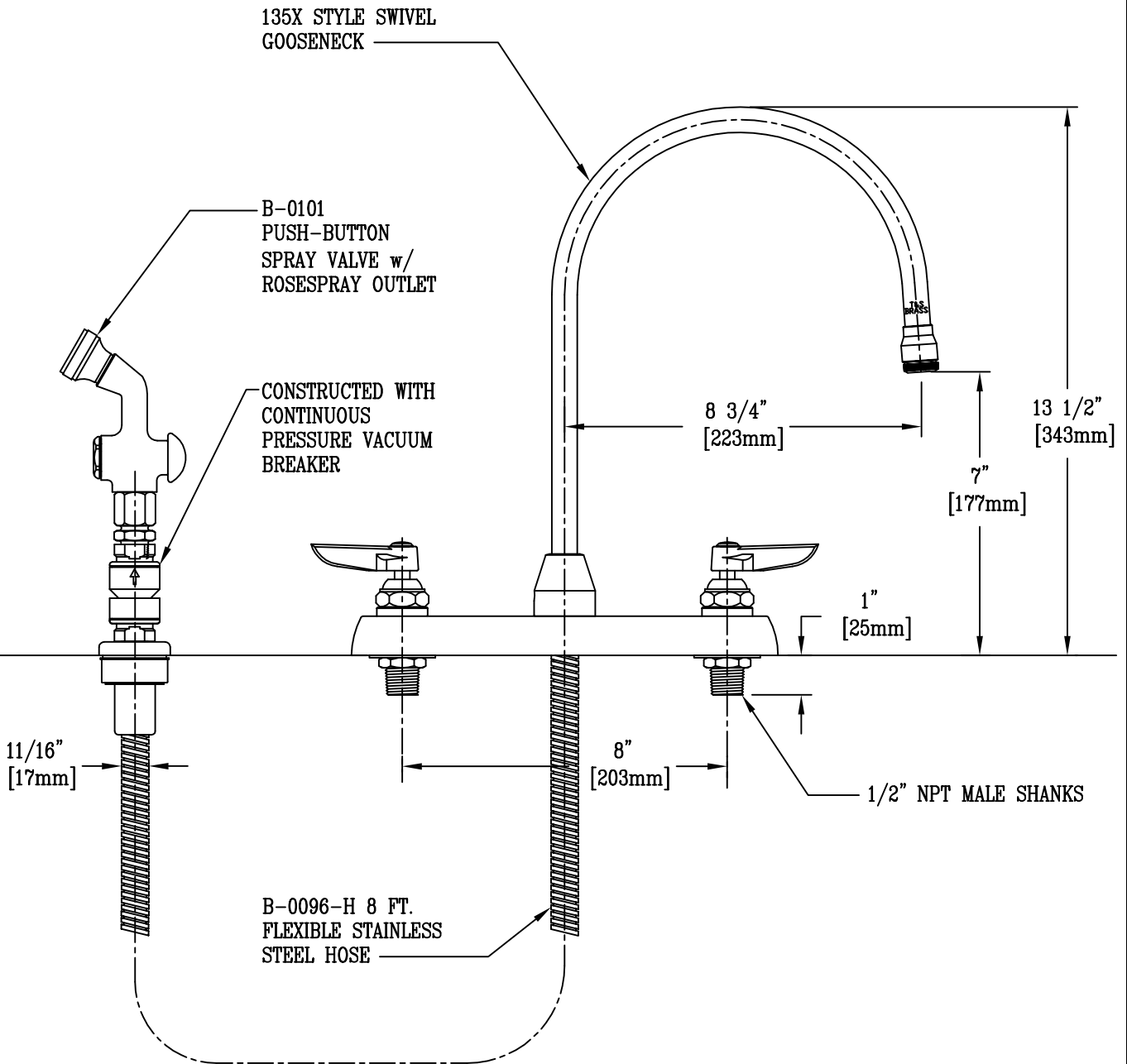
B-1172-T

**RELIABILITY
 BUILT IN**

Job Name:

Architect/Engineer Approval:

Notes:



Product Description:
 8" c/c WORKBOARD FAUCET WITH 1/2" NPT MALE INLETS, 135X SWING NOZZLE, 96" FLEXIBLE HOSE, B-0101 SPRAY VALVE w/ ROSESpray, & B-KF DECK FLANGE

Drawn:

WJS

Checked

LEL

Scale:

1 : 4

Approved

MVW

Date:

3/1/05