

**T&S BRASS AND BRONZE WORKS, INC.**

2 SADDLEBACK COVE / P.O. BOX 1088 / TRAVELERS REST, SC 29690

PHONE 800-476-4103

FAX 864- 834-3518



REG.#A2601  
ISO #9002

Model No.

B-23K

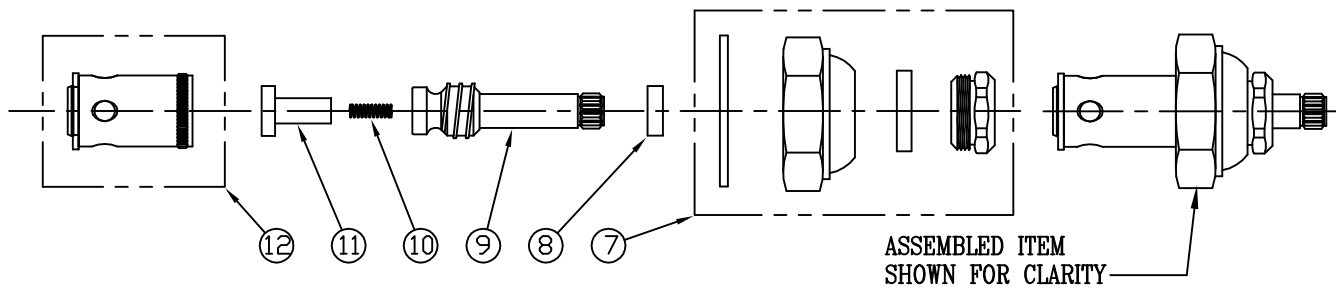
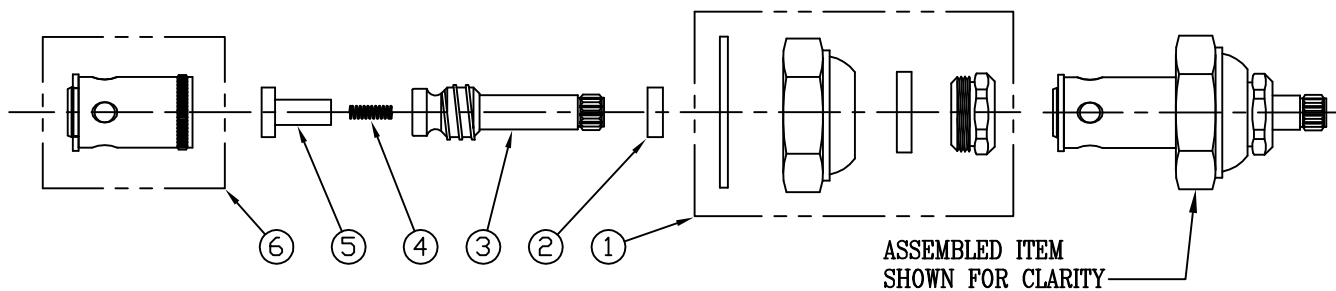
Item No.:

Job Name:

Architect/Engineer Approval:

Notes:

- ① 006557-40 BONNET ASSEMBLY, LEFT HAND.
- ② 001466-20 QUARTER TURN SPINDLE SLEEVE
- ③ 001908-25 ETERNA SPINDLE INSERT. LEFT HAND
- ④ 008976-45 CHECK SPRING
- ⑤ 003164-45 SEAT WASHER
- ⑥ 006658-40 REMOVABLE INSERT ASSEMBLY, LEFT HAND



- ⑦ 006557-40 BONNET ASSEMBLY
- ⑧ 001466-20 QUARTER TURN SPINDLE SLEEVE, RIGHT HAND
- ⑨ 001907-25 ETERNA SPINDLE INSERT, RIGHT HAND
- ⑩ 008976-45 CHECK SPRING
- ⑪ 003164-45 SEAT WASHER
- ⑫ 006659-40 REMOVABLE INSERT ASSEMBLY, RIGHT HAND

NOTE: KIT IS SUPPLIED WITH  
( 1 ) EACH OF ITEMS 1-12

Product Description:

SPINDLE ASSEMBLY PARTS KIT

Drawn:

WJS

Approved

CA

Checked

JKD

Scale:

6" = 1'

Date:

11/22/95