



T&S BRASS AND BRONZE WORKS, INC.

2 SADDLEBACK COVE / P.O. BOX 1088 / TRAVELERS REST, SC 29690

PHONE 800-476-4103

FAX 803-834-3518



REG. #A2601
ISO #9002

Model No.

B-2851-L

Item No.:

Job Name:

Architect/Engineer Approval:

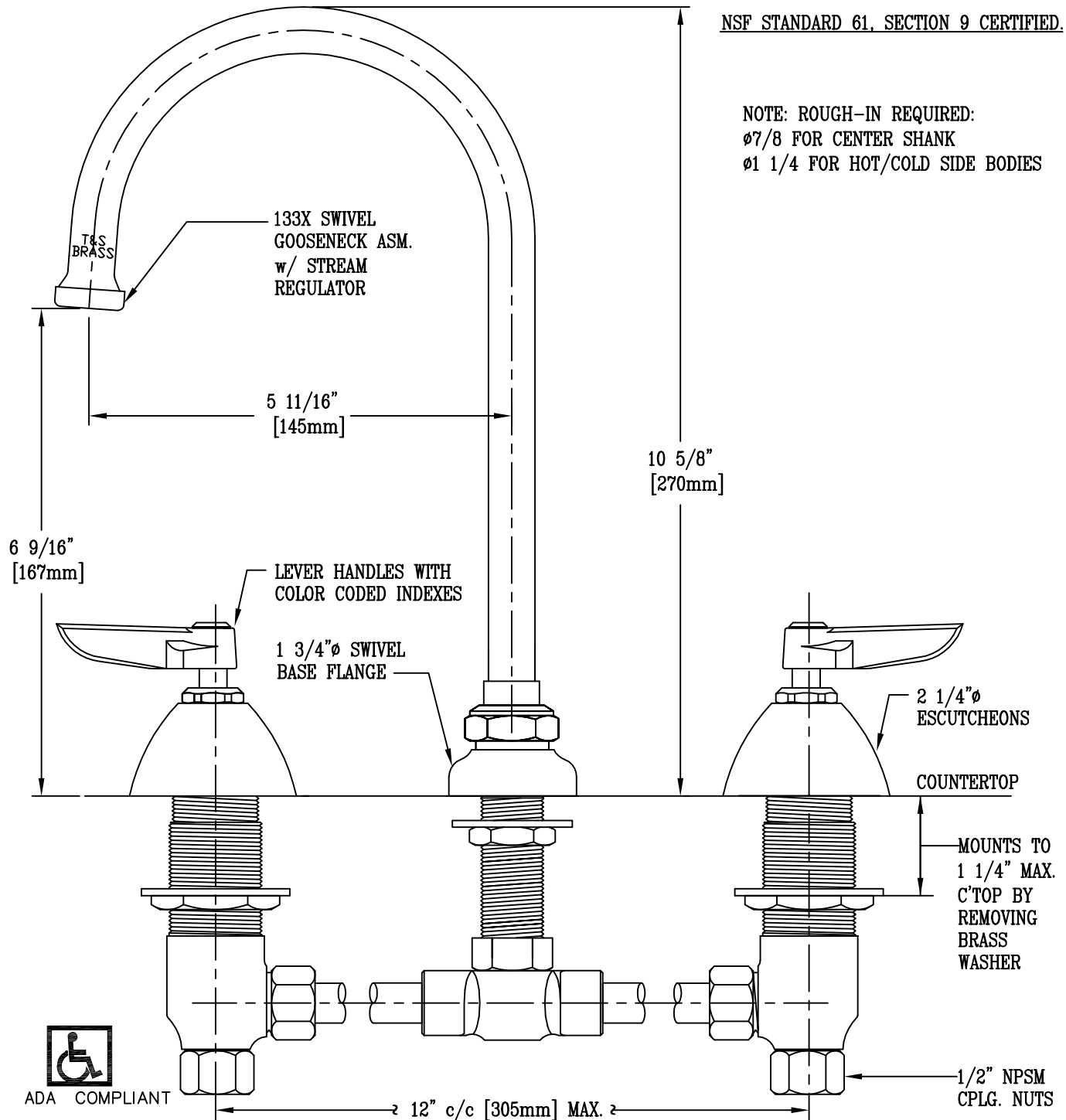
Notes:

NSF STANDARD 61, SECTION 9 CERTIFIED.

NOTE: ROUGH-IN REQUIRED:

ø7/8 FOR CENTER SHANK

ø1 1/4 FOR HOT/COLD SIDE BODIES



Product Description:

DECK MOUNTED COMMERCIAL FAUCET WITH
133X SWIVEL GOOSENECK, LEVER HANDLES,
& 12" INLET CENTERS

Drawn:

TEH

Approved

MVW

Checked

LEL

Scale:

1:2

Date:

1/25/05