

T&S BRASS AND BRONZE WORKS, INC.

2 SADDLEBACK COVE / P.O. BOX 1088 / TRAVELERS REST, SC 29690

PHONE 800-476-4103

FAX 864-834-3518



Model No.

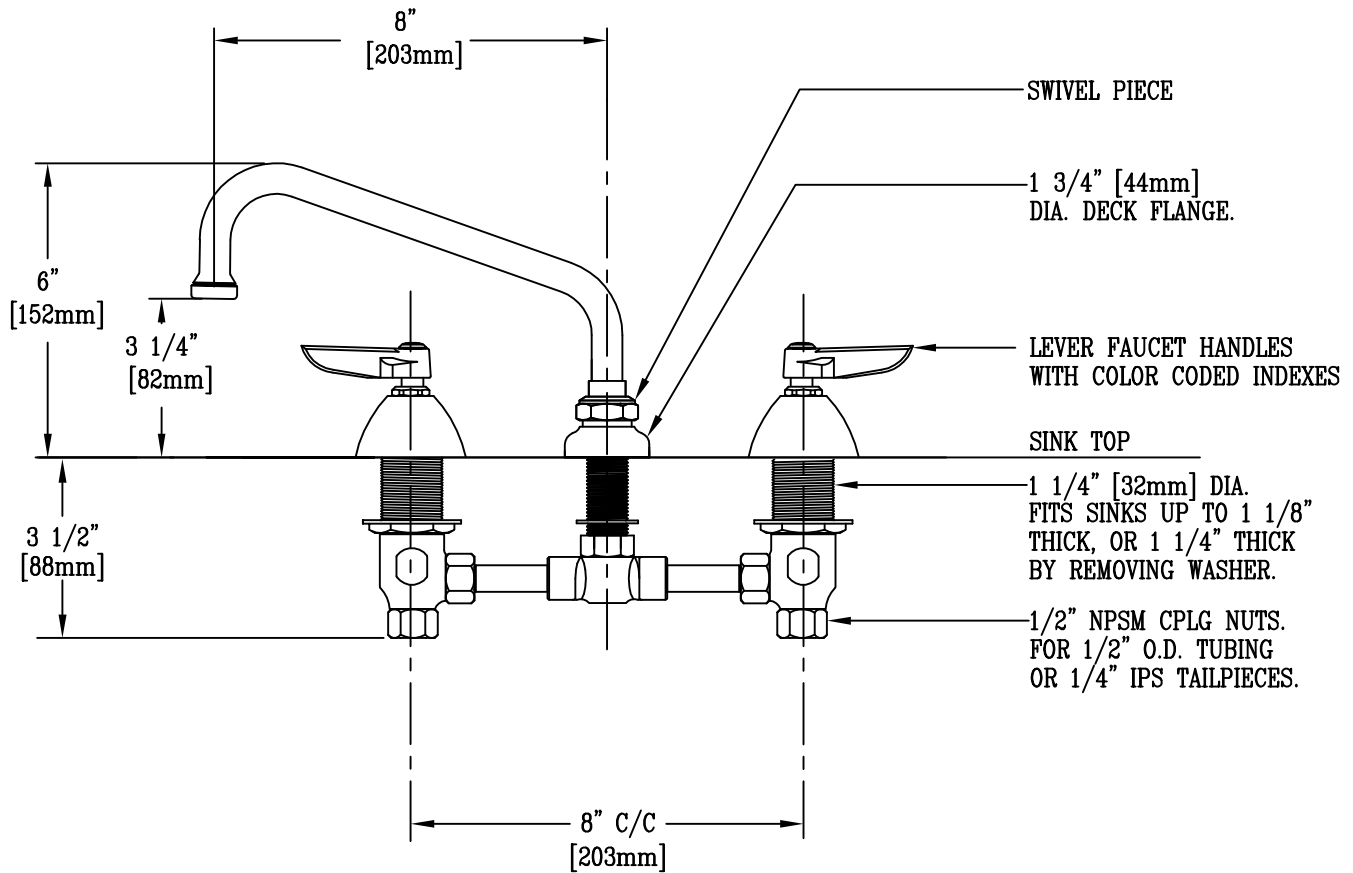
B-2855-060X

Item No.:

Job Name:

Architect/Engineer Approval:

Notes:



NOTE: ROUGH-IN REQUIRED:
 ø7/8 FOR CENTER SHANK
 ø1 1/4 FOR HOT/COLD SIDE BODIES

Product Description:
 DECK MOUNTED COMMERCIAL FAUCET WITH
 060X SWIVEL GOOSENECK & B-0199-01 AERATOR
 LEVER HANDLES, & 8" INLET CENTERS

| | | |
|-----------------|----------------|------------------|
| Drawn: WJS | Checked LEL | Scale: 1 : 4 |
| Approved MVW | | Date: 4/21/05 |