



T&S BRASS AND BRONZE WORKS, INC.

2 SADDLEBACK COVE / P.O. BOX 1088 / TRAVELERS REST, SC 29690

PHONE 800-476-4103

FAX 864-834-3518



REG.#A2601
ISO #9002

Model No.

B-2855

Item No.:

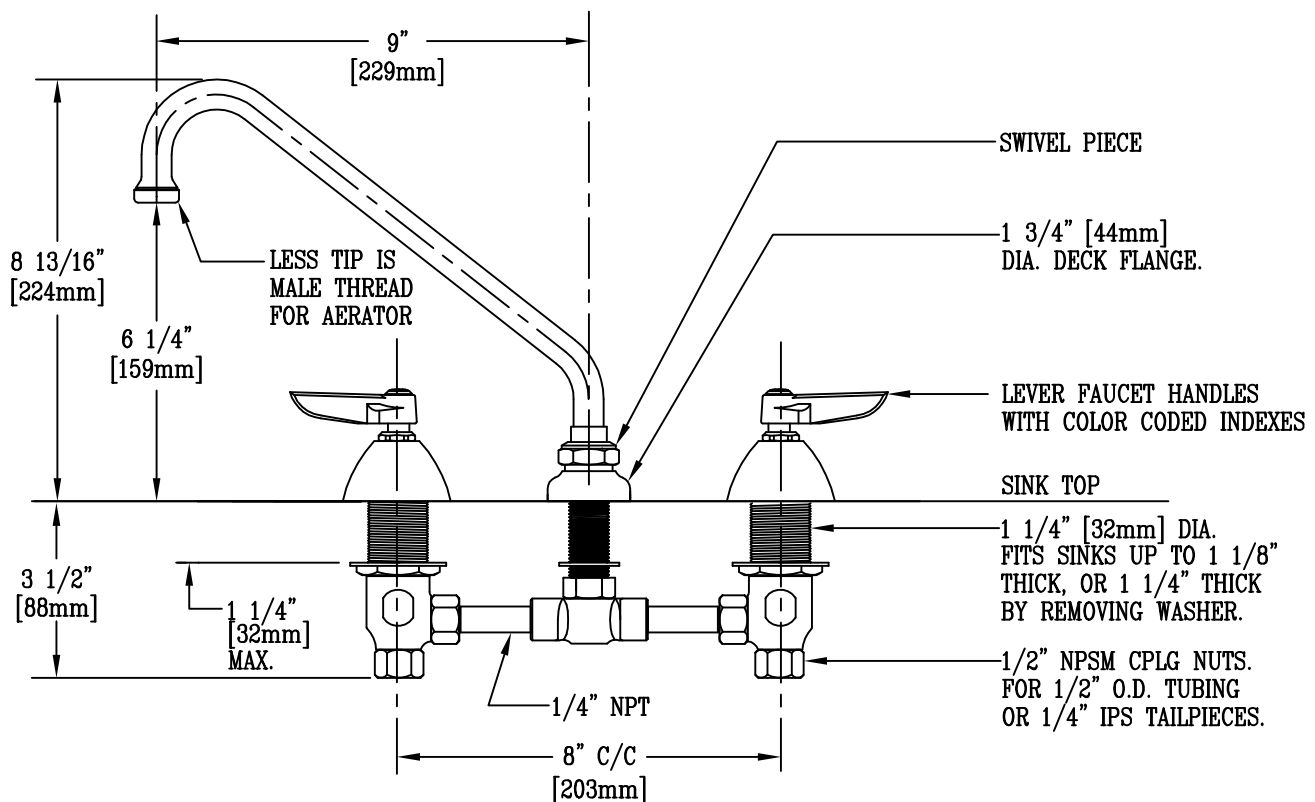
Job Name:

Architect/Engineer Approval:

Notes:



ADA COMPLIANT



NOTE: ROUGH-IN REQUIRED:
 ø7/8 FOR CENTER SHANK
 ø1 1/4 FOR HOT/COLD SIDE BODIES

NSF STANDARD 61, SECTION 9 CERTIFIED.

Product Description:
 DECK MOUNTED COMMERCIAL FAUCET WITH
 SWIVEL GOOSENECK & AERATOR OUTLET,
 LEVER HANDLES, & 8" INLET CENTERS

Drawn:

TEH

Approved

MVW

Checked

LEL

Scale:

3" = 1'

Date:

1/25/05